

I-49 Lafayette Connector
(Lafayette Regional Airport to I-10 / I-49 / US 167 Interchange)
Parish: Lafayette
State Project No. H.004273.5
Federal Aid Project No. H004273

I-49 LAFAYETTE CONNECTOR INTRODUCTORY MEETING OF THE SECTION 106 CONSULTING PARTIES

**Lafayette Public Library
Monday, January 30, 2017
5:30 – 7:00 pm**

AGENDA

1. Review of Agenda and Meeting Goals

Goals of Meeting:

- Discuss the Section 106 of the National Historic Preservation Act consultation process
- Discuss the roles of the Agency (Federal Highway Administration), the State Historic Preservation Officer, and other Consulting Parties
- Discuss future meeting and next steps in this process

2. Introductions

3. Section 106 Purpose and Goal

Per 36CFR Part 800, Section 800.1(a) the purposes are:

Section 106 of the National Historic Preservation Act requires federal agencies [*in this case the Federal Highway Administration (FHWA)*], to take into account the effects of their undertakings [*in this case the I-49 Connector project*] on historic properties, and afford the Council (*Advisory Council on Historic Preservation*) a reasonable opportunity to comment on such undertakings.

The section 106 process seeks to accommodate historic preservation concerns with the needs of federal undertakings through consultation among the agency official and other parties with an interest in the effects of the undertaking on historic properties.

The goal of the consultation is

- a) to identify historic properties potentially affected by the undertaking,
- b) to assess its effects, and
- c) to seek ways to avoid, minimize or mitigate any adverse effects of the undertaking on historic properties.

The role of the consulting parties is to comment on the assessment of effects and on the measures to avoid, minimize or mitigate any adverse effects that are found. (Section 800.2(4)(c))

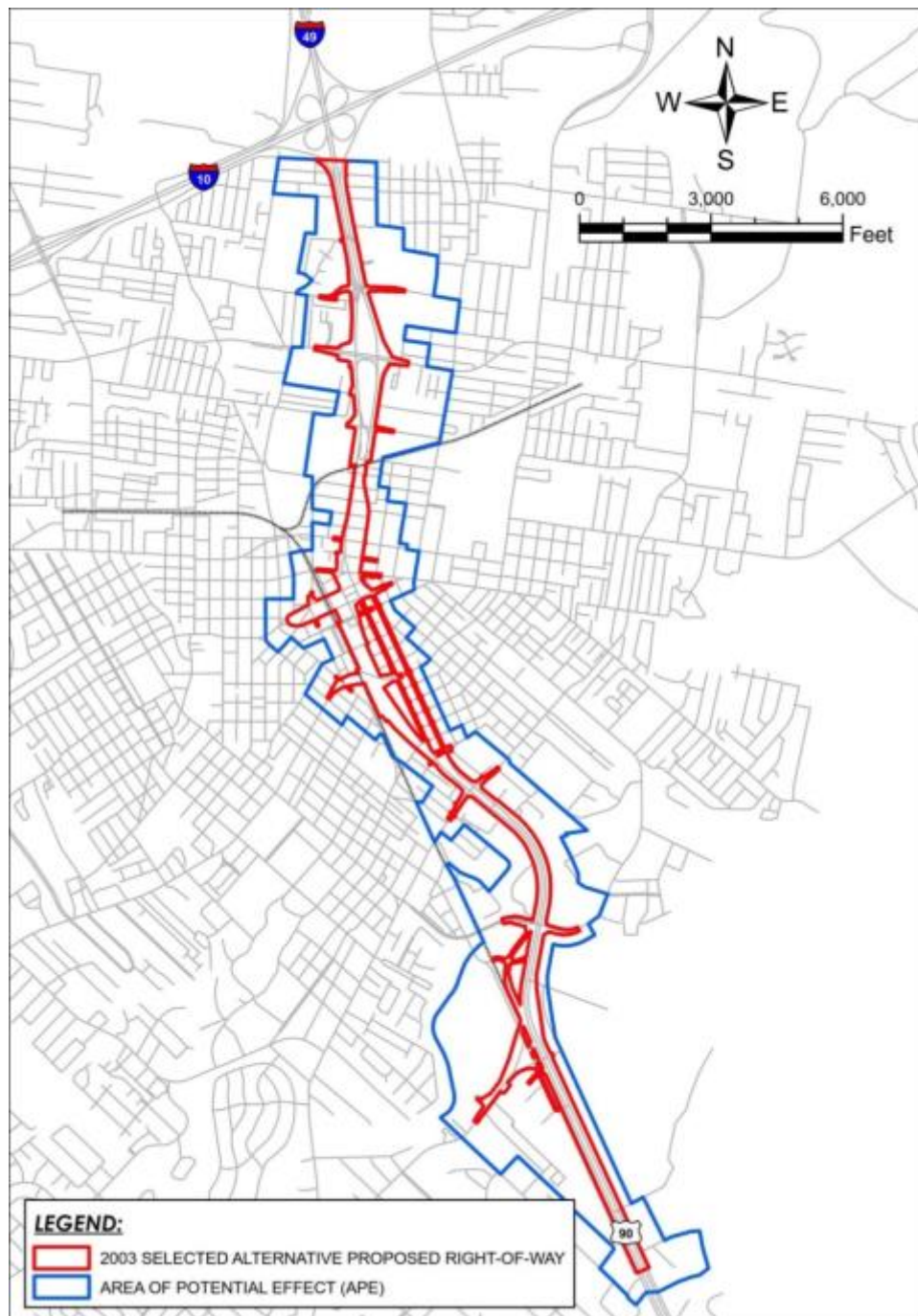
4. **A Memorandum of Agreement (MOA) was executed in July 2002 for the I-49 Connector project expires in July 2017. Link to the MOA can be found on the Lafayette Connector website under Historical Documents, Final EIS Vol. 2:**
<http://lafayetteconnector.com/project-library/#1442589560353-2c3e272d-2f82>
5. **Exhibit showing properties eligible for and listed on the National Register of Historic Places in the 2002 Section 106 process and listed in 2016 (attachment)**
6. **Area of Potential Effect map for the preliminary draft Standing Structures Update in 2016 (attachment)**

A preliminary draft Historic Architectural Resource Inventory Update (2016 Inventory) was prepared in February 2016. This report identifies and assesses historic-age structures (those approaching/meeting/exceeding 50 years of age) located within the direct and indirect Area of Potential Effect (APE). The APE identified for this project is the proposed right-of-way (direct) and a buffer of 250 feet from the proposed right-of-way or to the limit of a city block, if the 250 foot line falls within a block (indirect). Figure 1 shows the APE examined in the 2016 Inventory. Because the APE initially was determined to support the Reevaluation of the Selected Alternative defined in the 2003 Record of Decision, the right-of-way of that concept was used. Once the alternatives to be further studied in the Supplemental Environmental Impact Statement (SEIS) are identified, additional areas may be investigated to the extent that the APE for each of those may differ from the APE of the Selected Alternative.

7. **Exhibits showing the current comparison concepts 4.1, 4.2, 6.1, & 6.2 in the Supplemental EIS process (attachment).**
8. **Section 106 Regulations on the Advisory Council on Historic Preservation's website at:**
<http://www.achp.gov/work106.html>
<http://www.achp.gov/docs/CitizenGuide.pdf>
9. **Discussion of Future Meetings**
10. **Follow-up items**

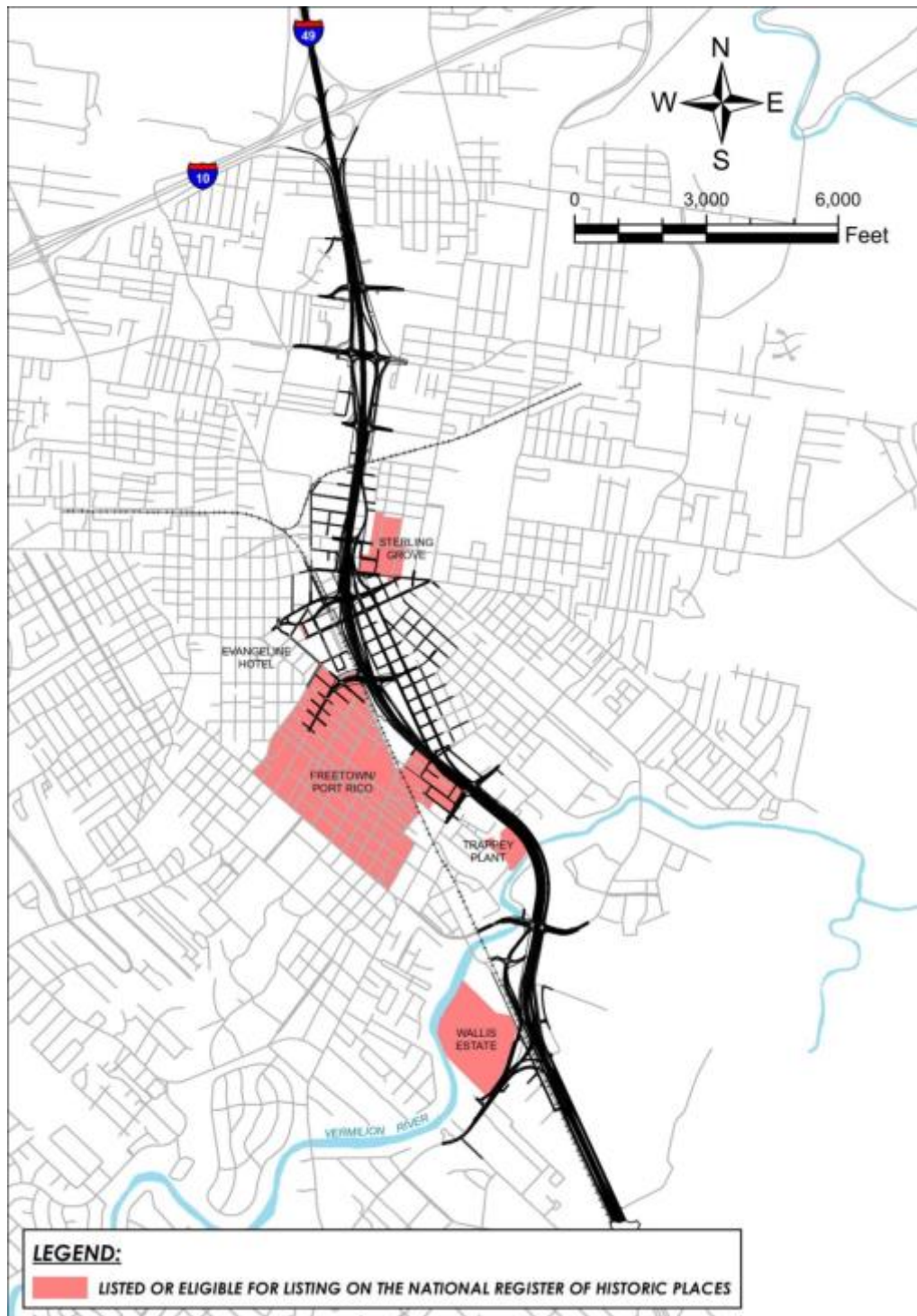
I-49 Connector
(Lafayette Regional Airport to I-10 / I-49 / US 167 Interchange)
Parish: Lafayette
State Project No. H.004273.5
Federal Aid Project No. H004273

Figure 1. Area of Potential Effect (APE) used for 2015 Investigation



I-49 Connector
(Lafayette Regional Airport to I-10 / I-49 / US 167 Interchange)
Parish: Lafayette
State Project No. H.004273.5
Federal Aid Project No. H004273

**Figure 2 Properties Listed or Determined Eligible for the National Register
in the Section 106 process in 2002 and Listed in 2016**



I-49 Connector
 (Lafayette Regional Airport to I-10 / I-49 / US 167 Interchange)
 Parish: Lafayette
 State Project No. H.004273.5
 Federal Aid Project No. H004273

Figure 3 Series 4, Comparison Concept 4.1



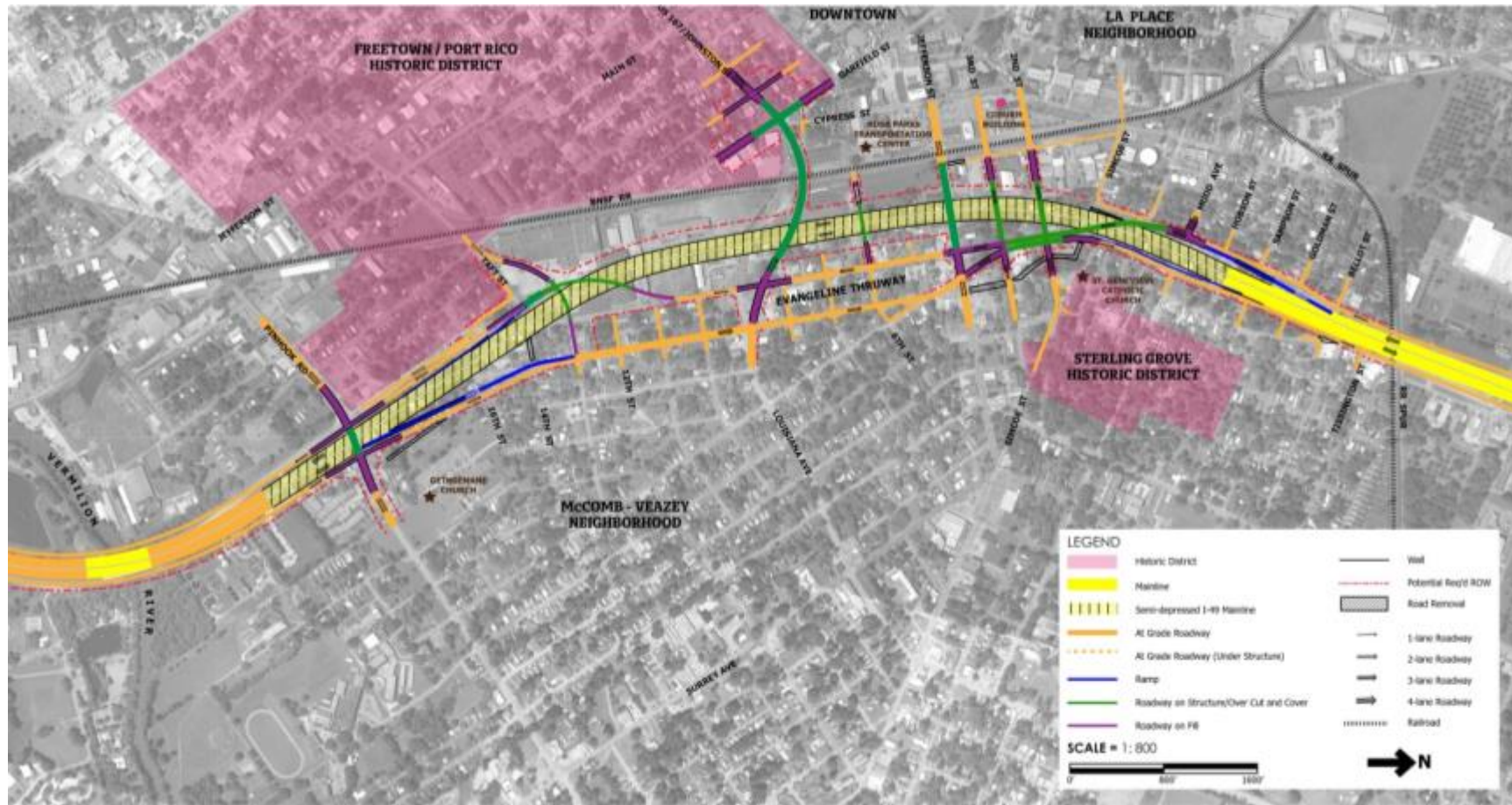
I-49 Connector
 (Lafayette Regional Airport to I-10 / I-49 / US 167 Interchange)
 Parish: Lafayette
 State Project No. H.004273.5
 Federal Aid Project No. H004273

Figure 4 Series 4, Comparison Concept 4.2



I-49 Connector
 (Lafayette Regional Airport to I-10 / I-49 / US 167 Interchange)
 Parish: Lafayette
 State Project No. H.004273.5
 Federal Aid Project No. H004273

Figure 5 Series 6, Comparison Concept 6.1



I-49 Connector
 (Lafayette Regional Airport to I-10 / I-49 / US 167 Interchange)
 Parish: Lafayette
 State Project No. H.004273.5
 Federal Aid Project No. H004273

Figure 6 Series 6, Comparison Concept 6.2

