



TECHNICAL ADVISORY COMMITTEE #5

LAFAYETTE ECONOMIC DEVELOPMENT AUTHORITY • FEBRUARY 26, 2016

State Project Number: H.004273.5
Federal Aid Project Number: H004273

AGENDA

- Welcome and Introduction
- Review of I-49 Lafayette Connector Concept Refinement Ideas
- Review of List of Spot Improvement Issues
- Discussion of any Other Concept Refinement Ideas
- Overview of I-49 Lafayette Connector Concept Refinement and Decision-Making Process
- Discussion of Preliminary Draft Evaluation Criteria
- Presentation on Signature Bridges
- Results of Recent Community-Wide Poll - One Acadiana
- Next Steps

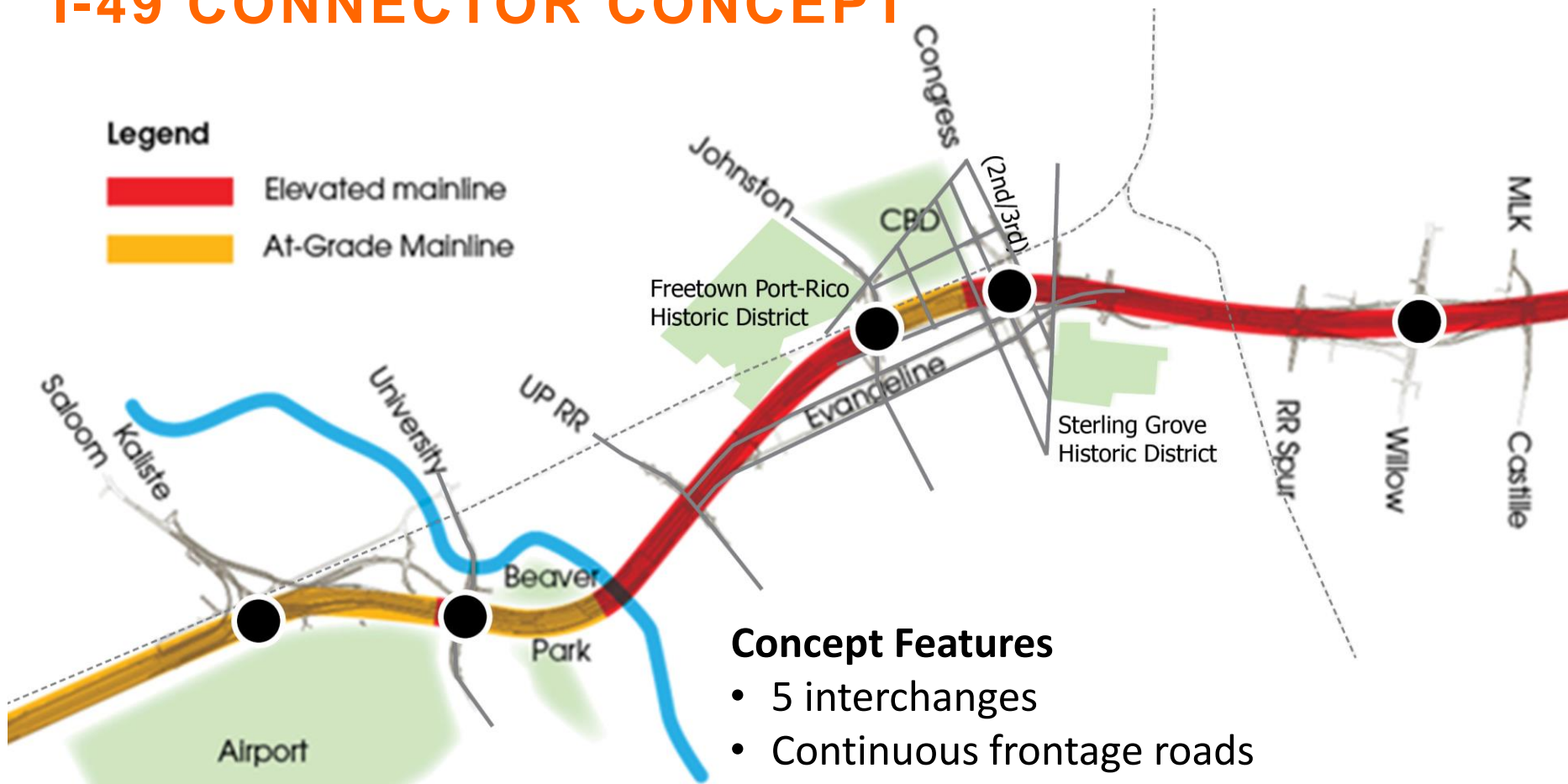


**REVIEW OF
I-49 LAFAYETTE CONNECTOR
CONCEPT REFINEMENT IDEAS**

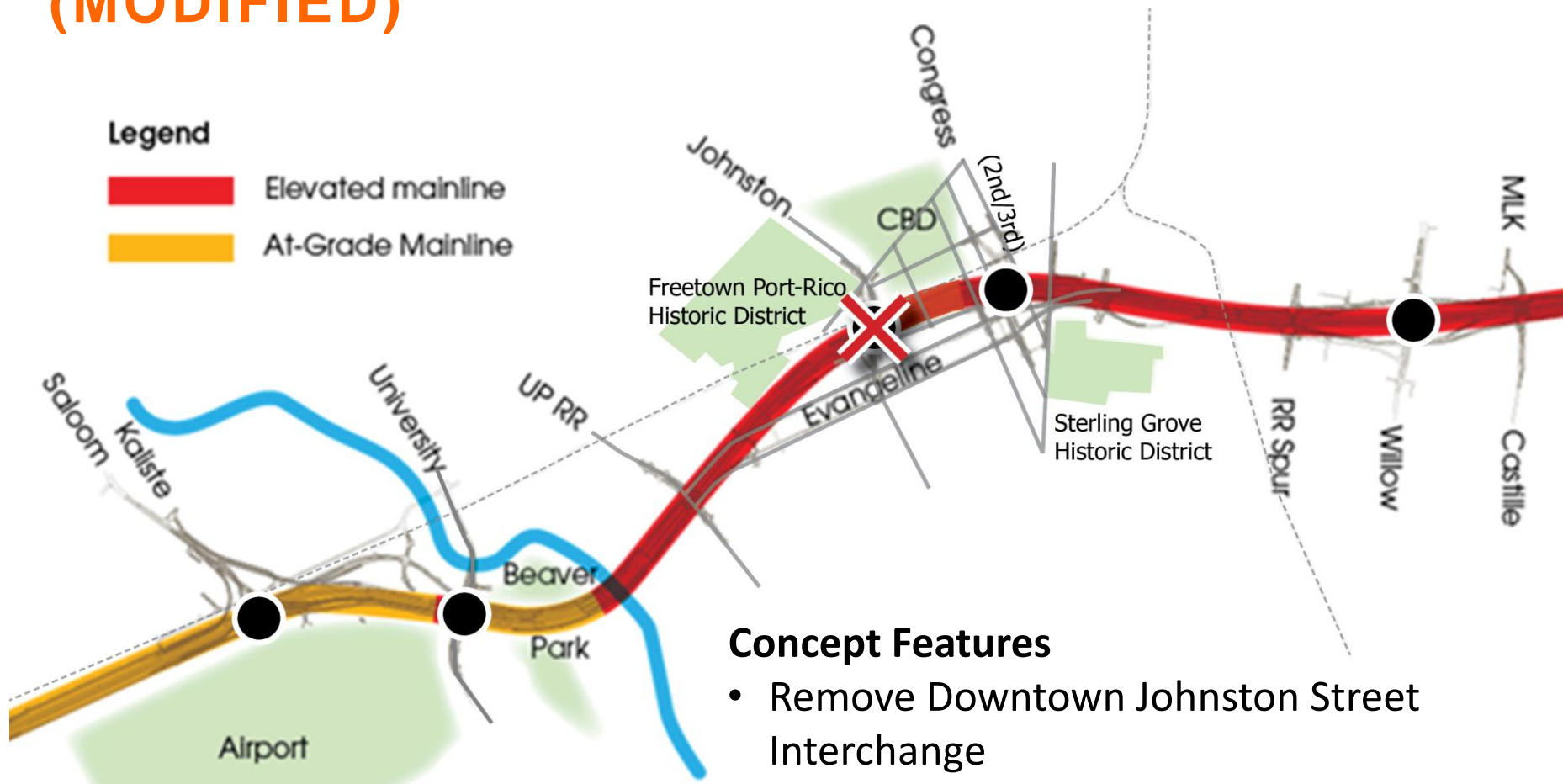
I-49 LAFAYETTE CONNECTOR CONCEPT REFINEMENT IDEA SOURCES

- 2003/2004 I-49 Lafayette Connector FEIS/ROD
- 2006-2008 I-49 Lafayette Connector Functional Plan Refinements
- Key Stakeholder Interviews (e.g., DDA, One Acadiana, 705 Club)
- Partner Meetings (LCG, APC)
- Community Vision and Values Workshop Exercises
- Community Working Group (CWG) Input
- Technical Advisory Committee (TAC) Input

CORE AREA CONCEPT #1: EXISTING 2003 ROD I-49 CONNECTOR CONCEPT



CA#2A: EXISTING I-49 CONNECTOR CONCEPT (MODIFIED)



Concept Features

- Remove Downtown Johnston Street Interchange
- Remove RR Underpass at Johnston Street
- Maintain Johnston Street as two-way Arterial

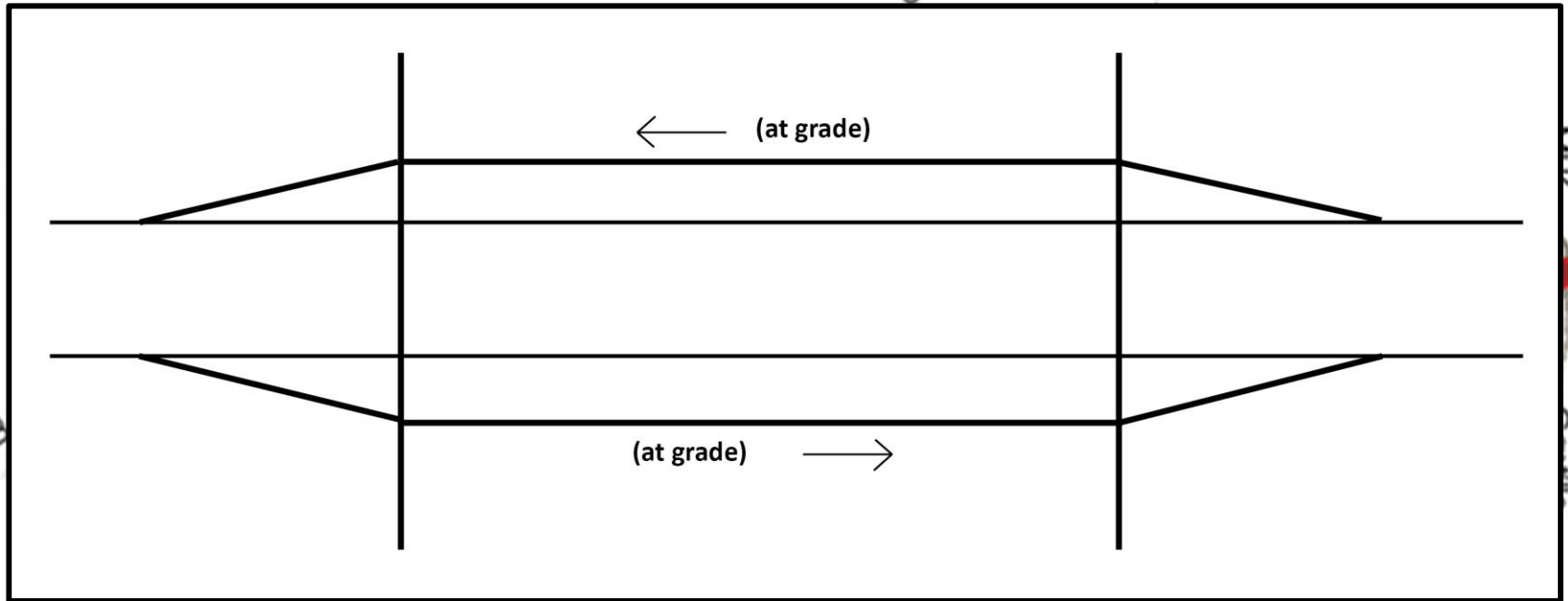
CA#2B: EXISTING I-49 CONNECTOR CONCEPT (MODIFIED)



Concept Features

- Remove Downtown 2nd/3rd Street Interchange
- Remove RR Underpass at 2nd/3rd Street
- Maintain 2nd/3rd Streets as one-way couplet

CA#3A: SPLIT DIAMOND DOWNTOWN INTERCHANGE, BETWEEN 2ND/3RD AND JOHNSTON STREETS



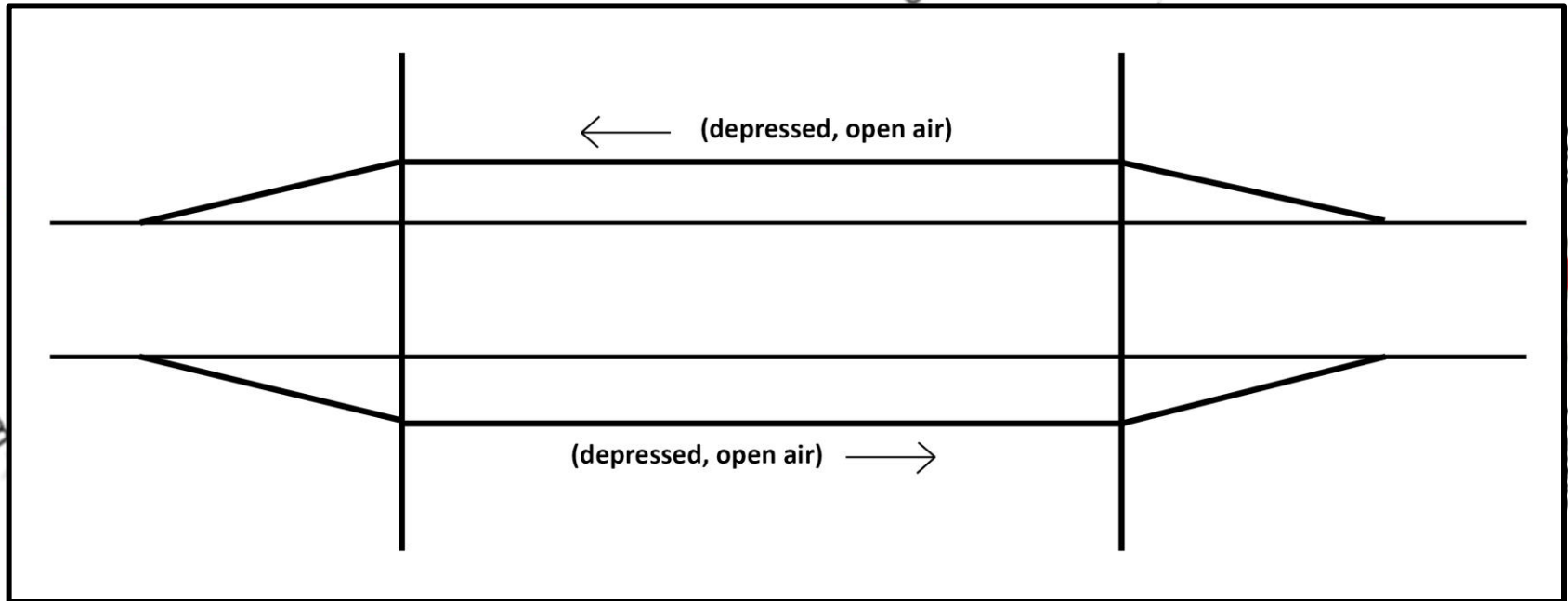
Concept Features

- One-way connecting roads, at-grade

Alrport

Park

CA#3B: SPLIT DIAMOND DOWNTOWN INTERCHANGE, BETWEEN 2ND/3RD AND JOHNSTON STREETS



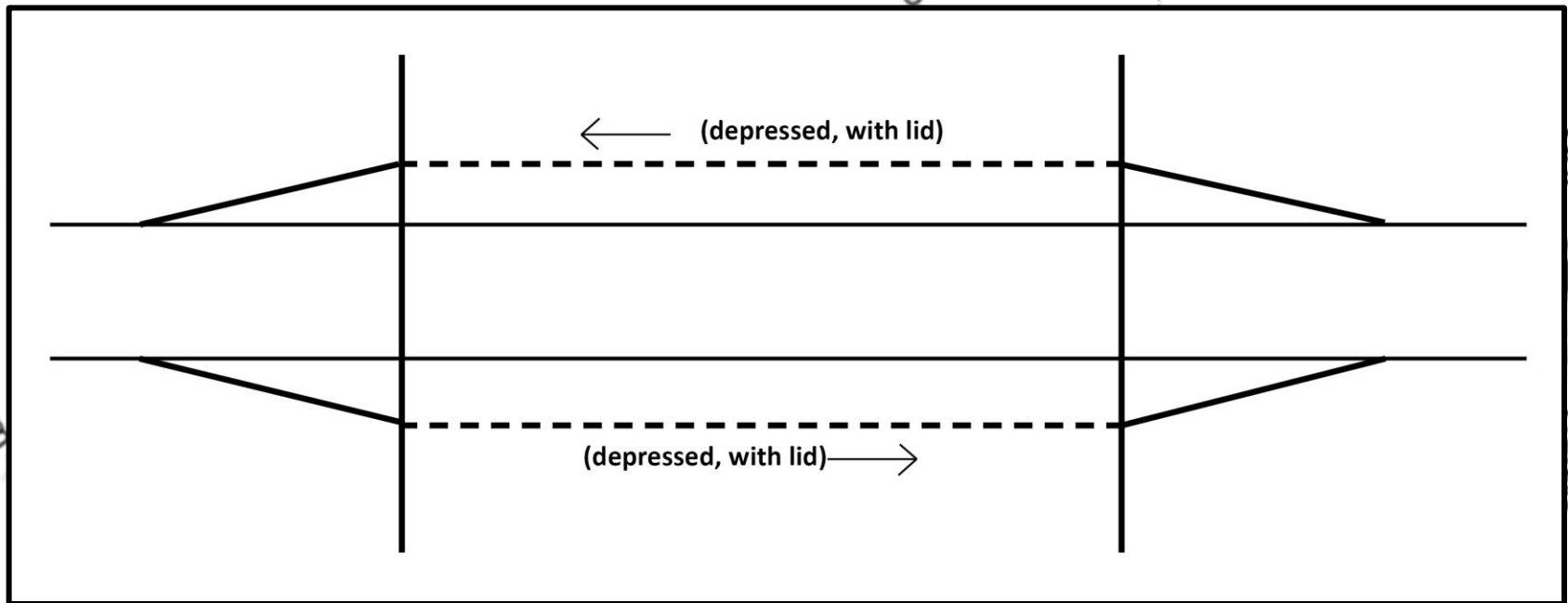
Concept Features

- One-way connecting roads depressed, open air

Alrport

Park

CA#3C: SPLIT DIAMOND DOWNTOWN INTERCHANGE, BETWEEN 2ND/3RD AND JOHNSTON STREETS



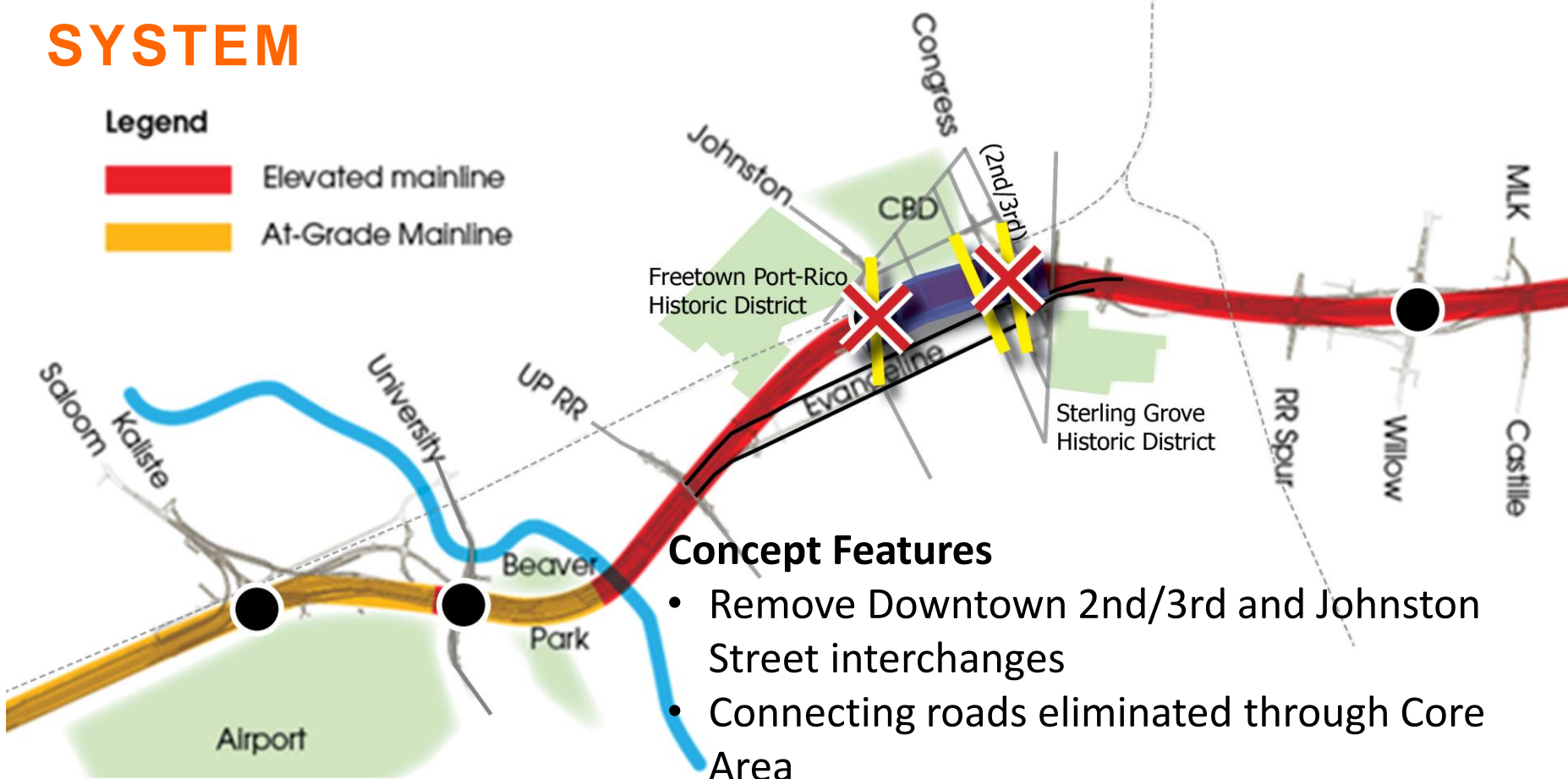
Concept Features

- One-way connecting roads depressed, with lid

Alrport

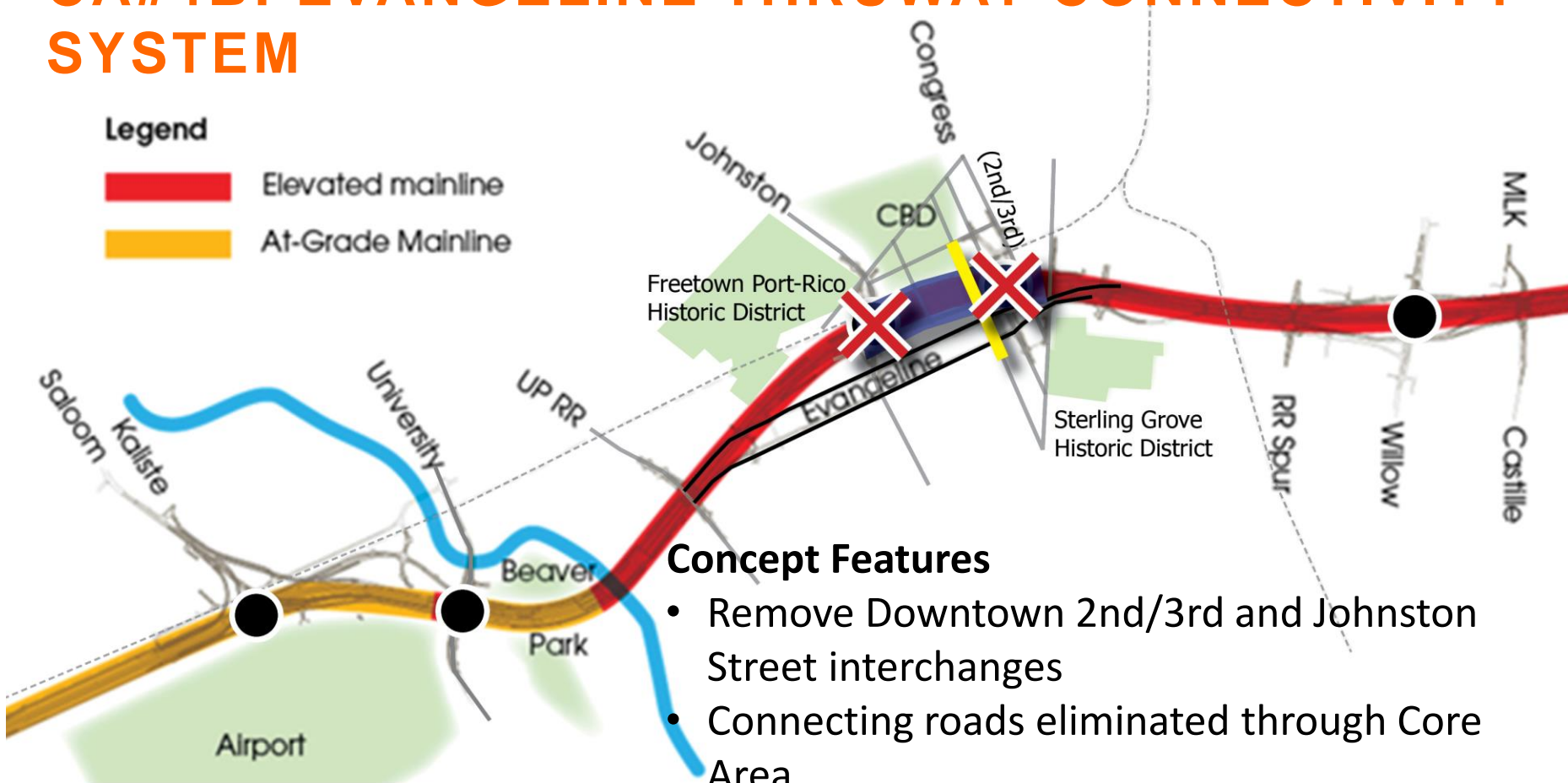
Park

CA#4A: EVANGELINE THRUWAY CONNECTIVITY SYSTEM



- Evangeline Thruway becomes one-way pair arterial connectivity roads with slip ramps (ramp pairs) to I-49
- 2nd/3rd and Johnston Streets become major urban arterial gateways to downtown, with potential for a Signature Bridge(s)
- Maintain RR underpasses at 2nd/3rd and Johnston Streets

CA#4B: EVANGELINE THRUWAY CONNECTIVITY SYSTEM



- Evangeline Thruway becomes one-way pair arterial connectivity roads with ramp pairs to I-49
- 2nd/3rd and Johnston Streets become major urban arterial gateways to downtown, with potential for a Signature Bridge(s)
- Remove RR underpasses at 2nd/3rd and Johnston Streets

CA#4C: EVANGELINE THRUWAY CONNECTIVITY SYSTEM



- Evangeline Thruway has one-way ramp pairs to I-49; investigate two-way corridors in between ramp pairs
- 2nd/3rd and Johnston Streets become major urban arterial gateways to downtown, with potential for a Signature Bridge(s)
- Remove RR underpasses at 2nd/3rd and Johnston Streets

CA#4D: EVANGELINE THRUWAY CONNECTIVITY SYSTEM



- Former Evangeline Thruway SB becomes two-way major urban boulevard, connected to I-49 slip ramps
- Former Evangeline Thruway NB becomes a local street
- 2nd/3rd and Johnston Streets become major urban arterial gateways to downtown, with potential for a Signature Bridge(s)

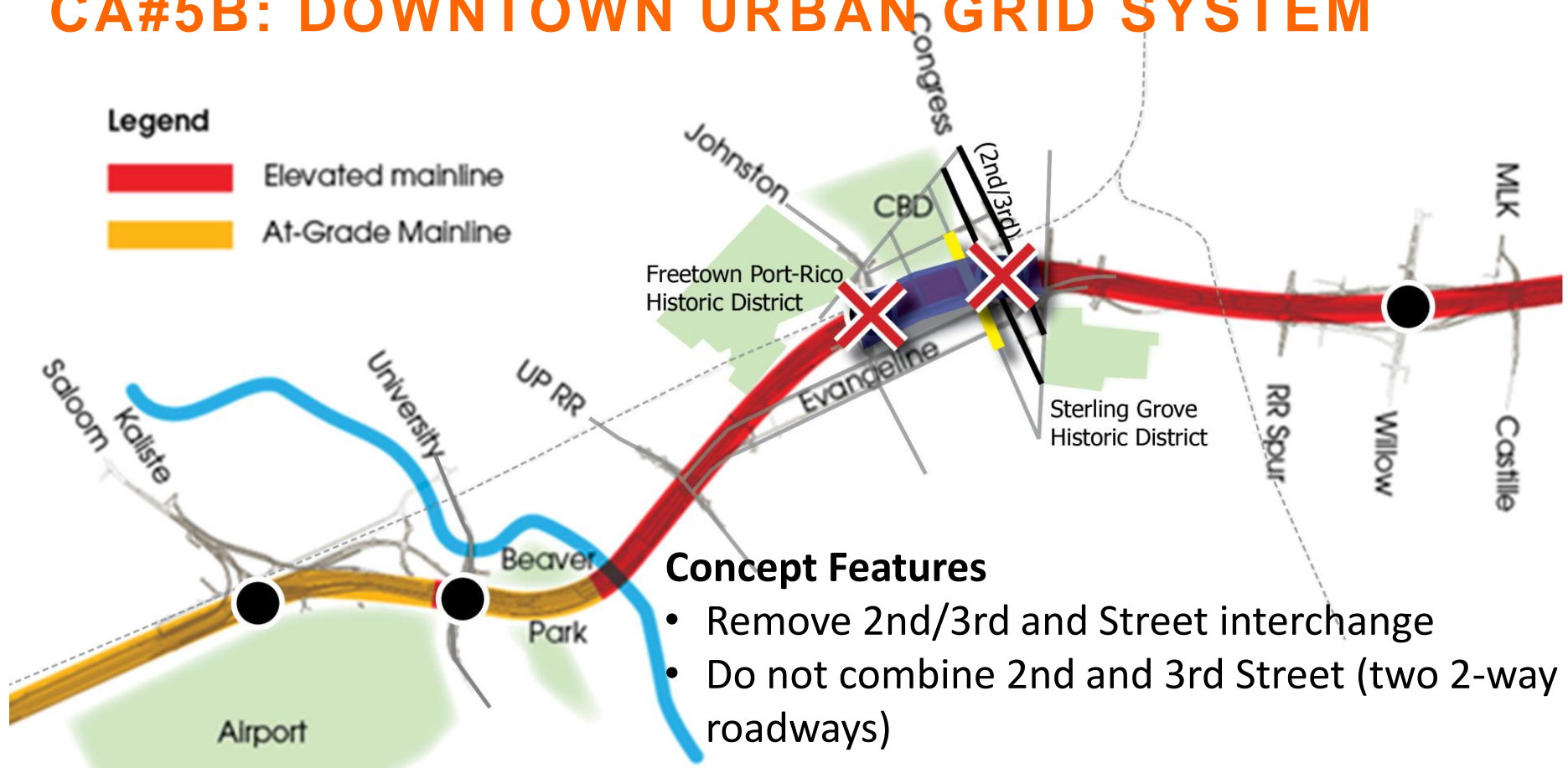
CA#5A: DOWNTOWN URBAN GRID SYSTEM



Concept Features

- Remove 2nd/3rd and Street interchange
- Do not combine 2nd and 3rd Street (two 2-way roadways)
- Evangeline Thruway still connected to frontage roads, with one-way ramp pairs to I-49
- RR underpasses at 3rd, Jefferson and Johnston
- Signature Bridge in 3rd to Johnston Street area
- Re-establish Downtown Grid

CA#5B: DOWNTOWN URBAN GRID SYSTEM



- Evangeline Thruway still connected to frontage roads, with one-way ramp pairs to I-49
- No RR underpasses, except at Jefferson Street
- Signature Bridge in 3rd to Johnston Street area
- Re-establish Downtown Grid



REVIEW OF SPOT IMPROVEMENT ISSUES

SPOT IMPROVEMENT ISSUES

- Safe and convenient pedestrian and bicycle access across the north end of corridor in commercial district
- Bicycle access through Kaliste Saloom interchange to Lafayette Regional Airport
- Potential for a bike/pedestrian multi-use path along the full length of the corridor
- Potential to convert one of the local reconnected streets between downtown and adjacent neighborhoods into a bicycle/transit/pedestrian-only corridor
- Minimize footprint of I-49 Lafayette Connector corridor through central Lafayette without frontage roads
- Is bridge structure too extensive at north end of corridor?

SPOT IMPROVEMENT ISSUES (CONTINUED)

- Raise mainline bridge structures higher between 2nd/3rd and Johnston Streets to create “gateway” to downtown, but don’t over scale surrounding community (higher bridges have longer access ramps)
- Could bigger bridge structures have more significant environmental impact?
- Potential for two iconic signature bridges in downtown at 2nd/3rd and Johnston streets, with enhanced bridge between allowing reconnection with neighborhoods and access to Transit Center
- Could signature bridge also incorporate appropriate land uses? (e.g., farmer’s market sheds, event space)

SPOT IMPROVEMENT ISSUES (CONTINUED)

- Need for frontage roads through Beaver Park, disrupting riverfront trail connectivity (potentially elevate)
- How to lessen Lafayette Regional Airport impacts:
 - Runway relocation impacts
 - Wetlands impacts
 - Lessen height of I-49 Lafayette Connector and interchanges
 - FAA runway standards upgraded since 2003/2004
- Impacts to auto dealership as a result of University/Surrey interchange and frontage road locations
- Impacts to new hotel on Hugh Wallis Road at Kaliste Saloom
- Impacts to properties on north side of Kaliste Saloom, including homes at Wallis Estate and Episcopal School of Acadiana



INPUT FROM COMMUNITY WORKING GROUP

INPUT FROM COMMUNITY WORKING GROUP

- For CA#4 series, consider at-grade pedestrian and bicycle RR crossings with only roadway depressed (e.g., Johnston, 2nd/3rd Streets)
- Consider RR Underpass at Pinhook Road
- Maintain Cypress Street across any underpass on west side of RR in Freetown-Port Rico historic neighborhood
- Preservation of and access to Coburn Building
- Potential modifications to I-10/I-49 Systems Interchange to add capacity
- Need better Lafayette identification and entrance signage along I-10
- Need robust location and directional signage incorporated into I-49 Connector

INPUT FROM COMMUNITY WORKING GROUP

- Examine redesign options for MLK/Castille linkage across I-49 Lafayette Connector corridor
- Examine the potential for DOTD to purchase entire contaminated parcel (over and above what is needed for transportation purpose) for Joint Development :
 - North: Johnston Street
 - East: SB Evangeline Thruway
 - South: Taft Street
 - West: BNSF RR corridor
- Optimize circulation and access for St. Genevieve Catholic Church along Evangeline Thruway
- Minimize visual impacts of bridges, other structures and local traffic on St. Genevieve Catholic Church
- Consider returning Evangeline Thruway to local streets, and add frontage roads along mainline through downtown area



**DISCUSSION OF
ANY OTHER
CONCEPT REFINEMENT IDEAS**

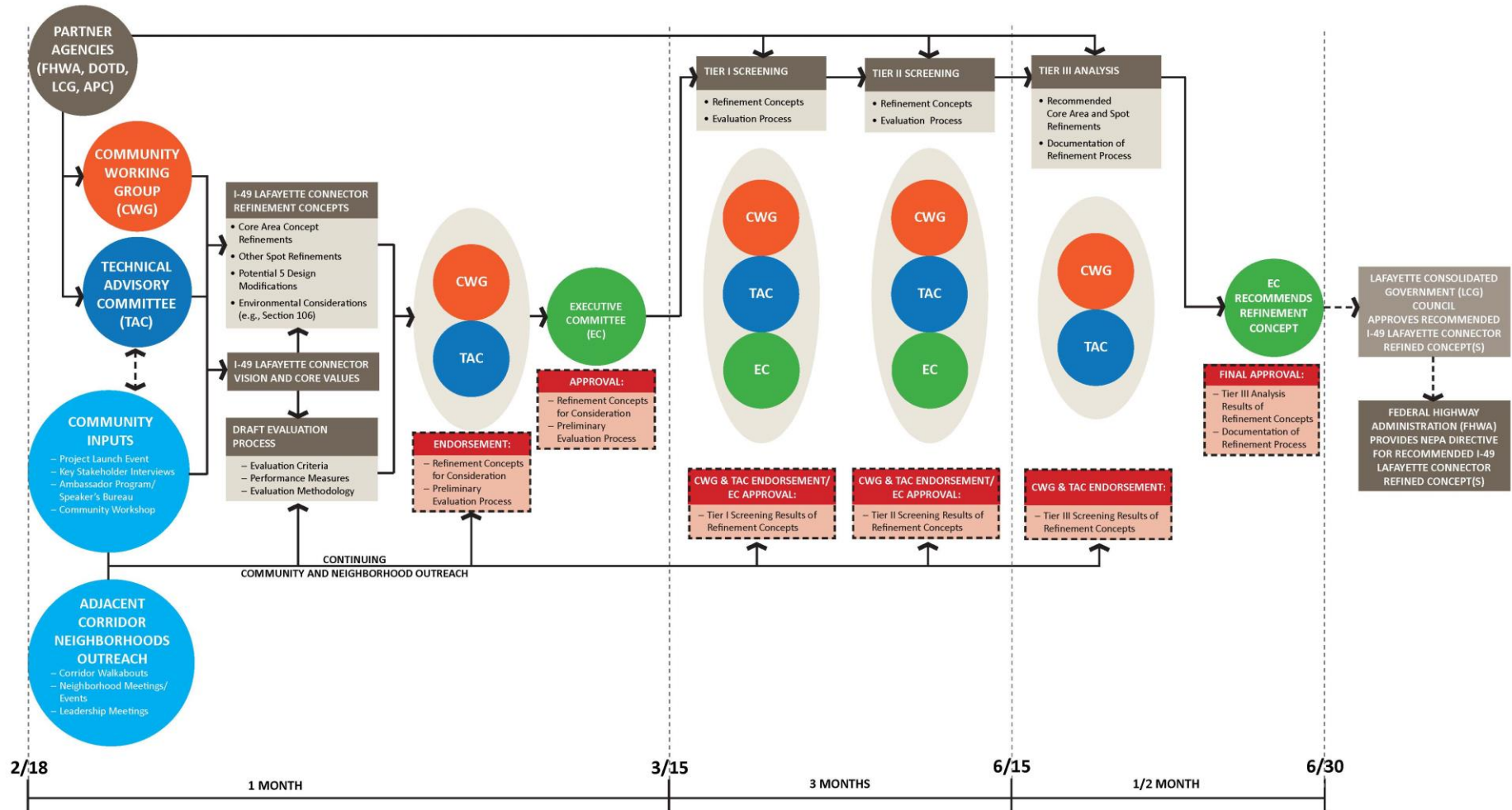


**I-49 LAFAYETTE CONNECTOR
CONCEPT REFINEMENT
AND
DECISION-MAKING PROCESS**

CONCEPT REFINEMENT AND DECISION-MAKING PROCESS

I-49 LAFAYETTE CONNECTOR CONCEPT REFINEMENT AND DECISION-MAKING PROCESS

Date: 02/24/2016



CONCEPT REFINEMENT AND DECISION-MAKING PROCESS

- I-49 Lafayette Connector Concept Refinement Ideas
 - Partner Agencies (FHWA, DOTD, LCG, APC)
 - Community Input Opportunities (Project Launch Event, Key Stakeholder Interviews, Ambassador Program/Speaker's Bureau, Community Workshop)
 - Adjacent Corridor Neighborhood Outreach (Corridor Walkabouts, Neighborhood Meetings/Events, Leadership Meetings)
 - Community Working Group (CWG)
 - Technical Advisory Committee (TAC)
- Draft Evaluation Process
- Endorsements from CWG and TAC (February)
- Approval from EC (Early March)

CONCEPT REFINEMENT AND DECISION-MAKING PROCESS

- Three-tiered Refinement Concept Screening/Evaluation Process
 - CWG & TAC Endorsements and EC Approval at every Tier of Screening/Evaluation
 - Higher Level Screening Process during Tier I and Tier II Screening
 - Detailed Evaluation Criteria applied during Tier III Evaluation
- CWG and TAC to Recommend I-49 Lafayette Connector Refined Concept to EC for Review and Approval
- Submit to LCG City Council for their consideration and adoption
- Submit to FHWA for consideration, acceptance and NEPA direction



PRELIMINARY DRAFT EVALUATION CRITERIA

PRELIMINARY DRAFT EVALUATION CRITERIA CATEGORIES AND EXAMPLES

- Engineering Considerations
 - Right-of-Way Requirements
 - Constructability
 - Implementation/Operating Costs
- Human Environment Considerations
 - Displacements
 - Impacts on Historic Properties
 - Noise Impacts

PRELIMINARY DRAFT EVALUATION CRITERIA CATEGORIES AND EXAMPLES (CONTINUED)

- Natural Environment Considerations
 - Wetland Impacts
 - Water Quality
 - Unique Vegetation Stands (Live Oak Trees)
- Community Context
 - Complementary to Adjacent Land Uses
 - Support for Economic Development
 - Opportunities for Joint Development

EVALUATION CRITERIA MATRIX FORMAT

[illegible]



SIGNATURE BRIDGES / ICONIC STRUCTURES

WHAT IS A SIGNATURE BRIDGE / ICONIC STRUCTURE?

- They are ***visual statements***, easily recognizable.
- They are ***placemaking elements*** and are more than just structures; it ***defines a city or place*** just by its presence.
- They are a focal point and can be a ***gateway***.
- They can be a ***tourist attraction***.
- ***Exceed the normal expectations*** of quality, aesthetic, artwork and functionality and are one of a kind structures.

EXAMPLES OF ICONIC STRUCTURES



Golden Gate Bridge, San Francisco



Brooklyn Bridge, New York City



Sydney Harbor Bridge, Australia



Ponte Vecchio, Florence, Italy

TYPES OF SIGNATURE BRIDGES



Cable Stayed



Arch



Suspension



Extradosed



Viaduct



Gateway Marker

CABLE STAYED BRIDGE EXAMPLES



Marine Way Bridge, Southport, UK



Seri Wawasan Bridge, Malaysia



Rama VIII, Bangkok, Thailand



Alamillo Bridge, Seville, Spain

ARCH BRIDGE EXAMPLES



Hellgate Bridge, New York City



Yaquina Bay Bridge, Newport, OR



Woodland Viaduct, Scarsdale, NY

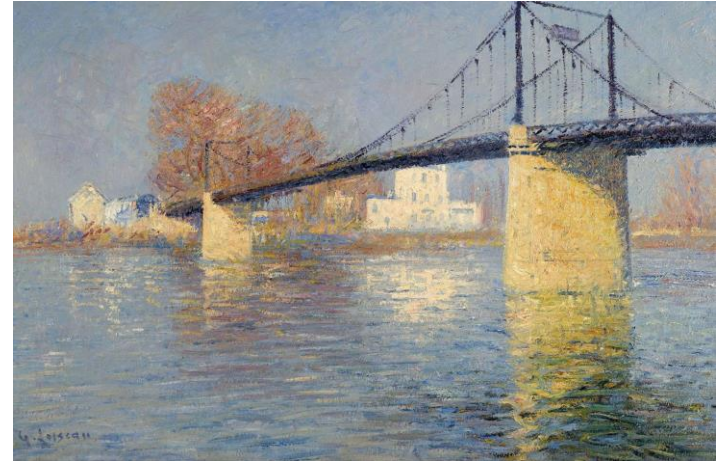


Bac de Roda Bridge, Barcelona, Spain

SUSPENSION BRIDGE EXAMPLES



George Washington Bridge, NYC



Bridge at Triel sur Seine, France



Clifton Suspension Bridge, Bristol, UK



Steel Suspension Bridge, Netherlands

EXTRADOSSED BRIDGE EXAMPLES



Sunniberg Bridge, Switzerland



Visla River Bridge, Poland



New Europe Bridge, Bulgaria-Romania

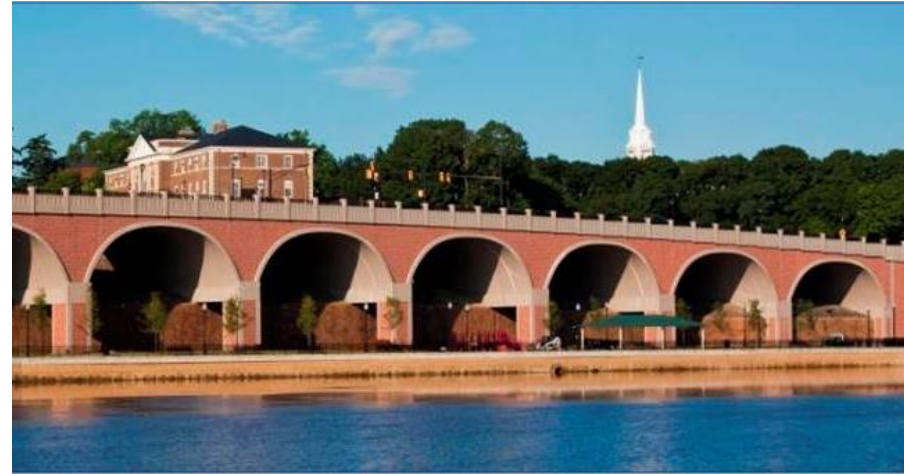


I-35 Brazos River Bridge, Waco, Texas

VIADUCT EXAMPLES



Sixth Street Viaduct, Los Angeles



George Street Viaduct, New Brunswick, NJ



IM Viadukt, Zurich, Switzerland



Viaduc Des Arts, Paris, France

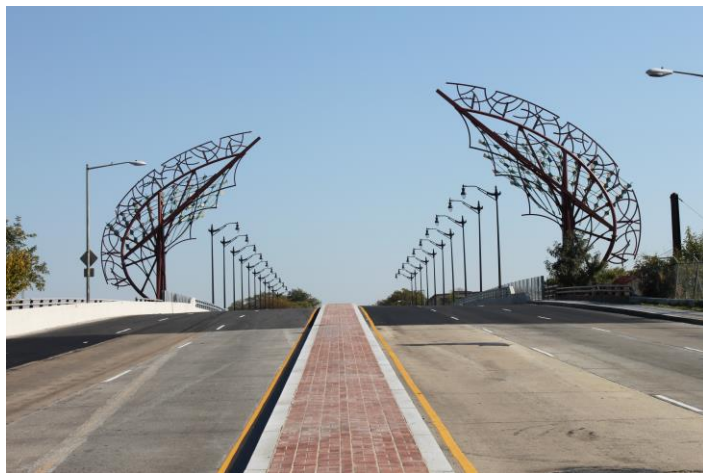
GATEWAY MARKER EXAMPLES



Hope Memorial Bridge, Cleveland



Arlington Memorial Bridge, Washington DC



New York Ave Bridge, Washington DC



24th Street Bridge, Council Bluffs, Iowa



**RESULTS OF
COMMUNITY-WIDE POLL
BY ONE ACADIANA**

PUBLIC OPINION SURVEY (JANUARY 10-15, 2016)

- How important is the completion of I-49 South through Lafayette to the future of Lafayette Parish?

| | |
|---------------------------|--------------|
| Important | 81.0% |
| Neither | 8.0% |
| Unimportant | 9.4% |
| Don't Know/Refused | 1.6% |

PUBLIC OPINION SURVEY (JANUARY 10-15, 2016)

- Do you think the I-49 Lafayette Connector could be built in a way that could improve the neighborhoods which are currently adjacent to the Evangeline Thruway?

| | |
|------------------|--------------|
| Yes | 54.8% |
| No | 33.0% |
| Undecided | 11.0% |
| Refused | 1.2% |



NEXT STEPS

NEXT STEPS

- March EC
 - Results of the Community Vision and Values Workshop
 - Preliminary Vision and Core Values Results
 - Approval on Universe of I-49 Lafayette Connector Refinement Concepts and Evaluation Methodology
- March CWG & TAC
 - Continued Evaluation of Selected Alternative Refinement Concepts
- April CWG & TAC
 - Initial Report-out on Evaluation Results
- May/June CWG & TAC
 - Complete report-out on Evaluation Results of I-49 Lafayette Connector Concept Refinements

NEXT STEPS

- Project Office Opening (Rosa Parks Center)
- Community Walkabouts (2/20/2016 and 2/26-27/2016)
 - Freetown-Port Rico Neighborhood/Coterie
 - McComb-Veazey Neighborhood/Coterie
 - Downtown Lafayette
 - La Place Neighborhood/Coterie
 - Sterling Grove Historic District
- Ambassador Program
- Project Website (www.LafayetteConnector.com)
- Community Workshop #2: Refined I-49 Lafayette Connector Concepts



LafayetteConnector

Acadiana's Path Forward

A **DOTD** CONSTRUCTION PROGRAM

THANK YOU